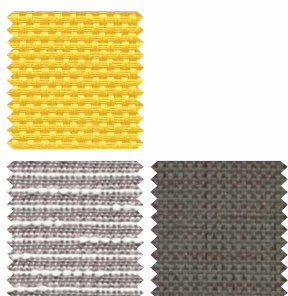


textiles

PANELS / PANNEAUX

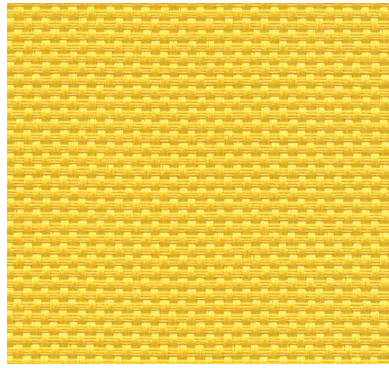


Effective July 25th, 2016
En vigueur le 25 juillet 2016

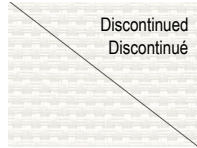
artopex®

Grade 1

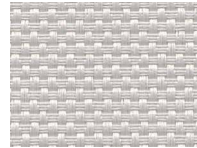
WHISPER II



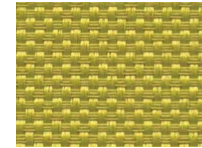
Peep WH91



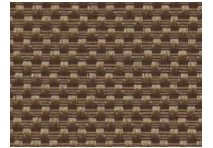
Dim WH76



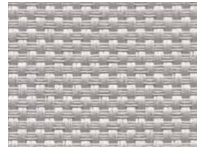
Tranquility WH80



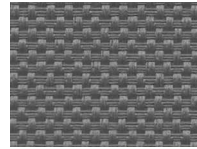
Reserve WH90



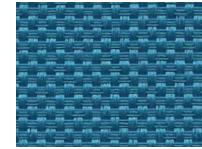
Muffle WH87



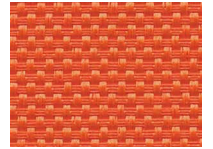
Stillness WH83



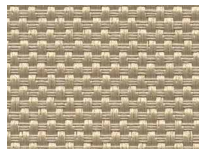
Lull WH89



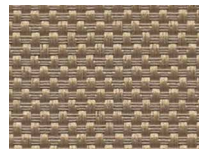
Placid WH94



Mellow WH93



Hush WH81



Mute WH84



Serenity WH85



Mum WH97

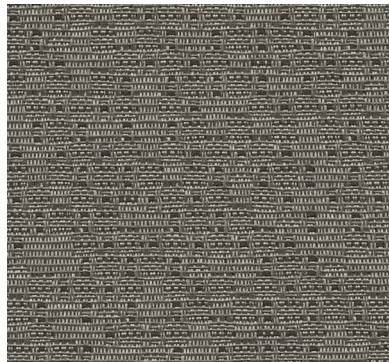


Secret WH96



Chant WH95

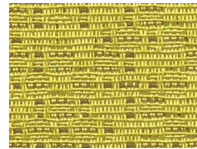
NETIQUETTE



Inkjet NT96



Bitmap NT91



Refresh NT99



Gamma NT98



Analog NT94

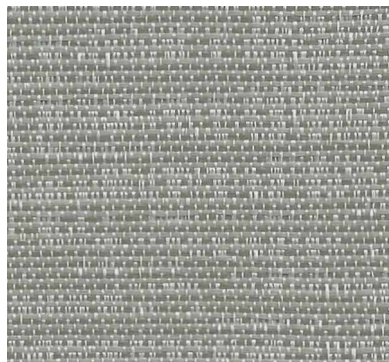


Pixel NT90



Vector NT97

STRATA



Glacial SR81



Crag SR13



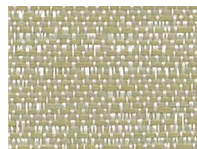
Lichen SR57



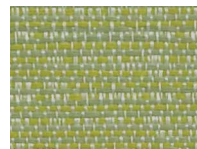
Seacliff SR45



Petra SR85



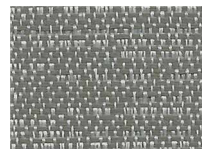
Tor SR11



Seneca SR58



Metamorphic SR52



Levee SR83



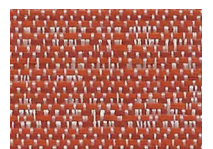
Druid SR12



Gulley SR15

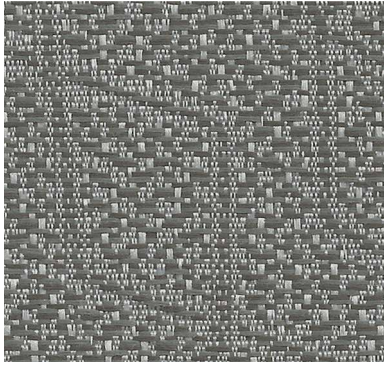


Sediment SR71



Meteora SR78

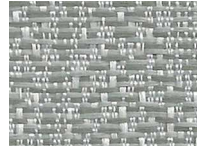
CRYSTALLINE



Carbonate YS82



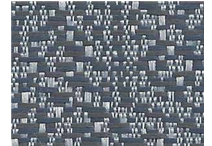
Travertine YS13



Stalagmite YS83



Pyroxene YS81



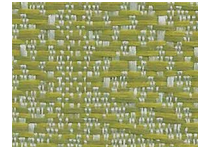
Mineral YS42



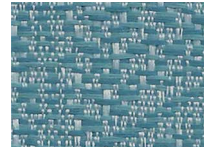
Tectonic YS21



Seismic YS52



Diorite YS51



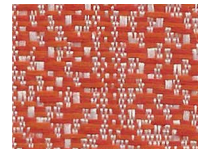
Concentric YS41



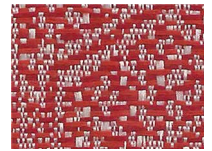
Stalagite YS12



Vesuvian YS72



Mantle YS71



Feldspar YS31

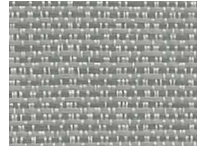
CASCADE



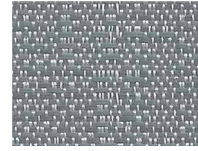
Calcium AS10



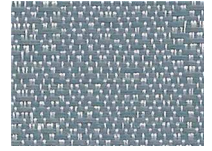
Aero AS19



Gorge AS86



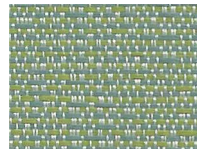
Promontory AS83



Stack AS45



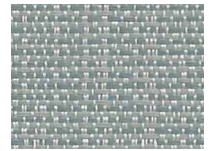
Escarpment AS17



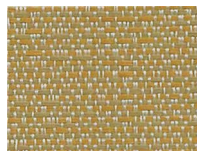
Geologic AS52



Peak AS51



Spur AS85



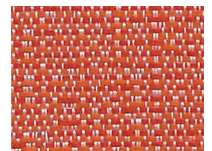
Kimberlite AS21



Granulite AS15



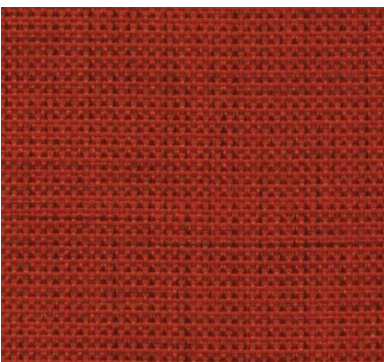
Igneous AS91



Plutonic AS73

Grade 2

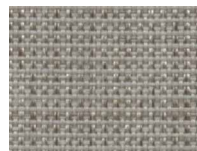
OFF THE GRID



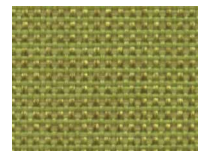
Flame OF10



Thermal OF06



Lava OF05



Flora OF12



Coal OF02



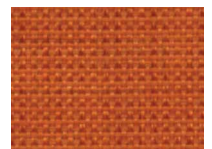
Fossil OF04



Hydro OF03



Tidal OF11



Earthglow OF09

DASHING



Bespoke Tan DH46



Polished Slate DH44



Genteel Beige DH43

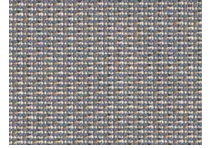


Dapper Grey DH47

ESSENCE



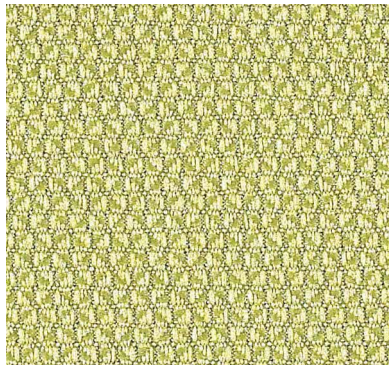
Mayflower ES35



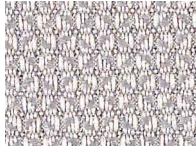
Queen Mary ES37

Grade 3

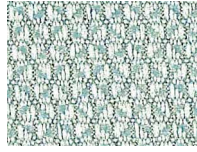
PACT



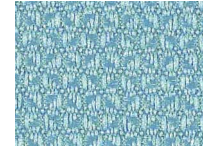
Fern PC88



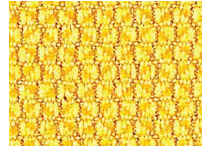
Dove PC55



Coastal PC33



Azure PC11



Eureka PC77



Taupe PC31



Roast PC76

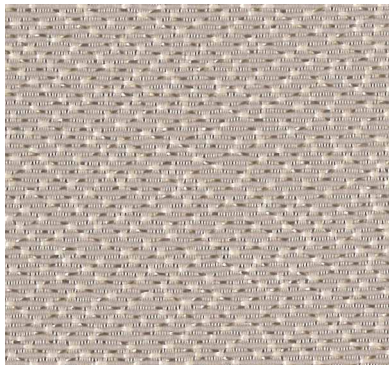


Nectar PC43



Roma PC87

UNIVERSE



White Cap UN77



Mica UN33



Seneca UN55



Cosmic UN26



Milkyway UN44

Moodboard

PROPOSED COLOR SCHEMES / PROPOSITION D'AGENCEMENT DE COULEURS



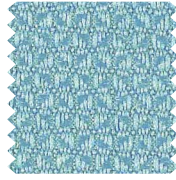
Sea Salt / Sel de mer SM



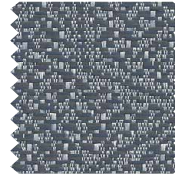
NT94



AS45



PC11



YS42



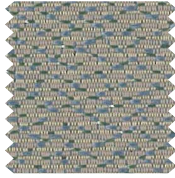
DH43



NT96



AS86



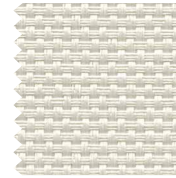
UN26



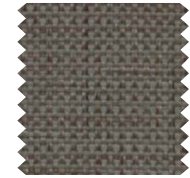
WH89



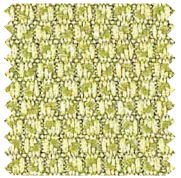
OF11



WH76



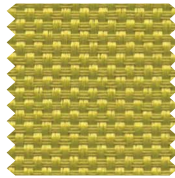
OF02



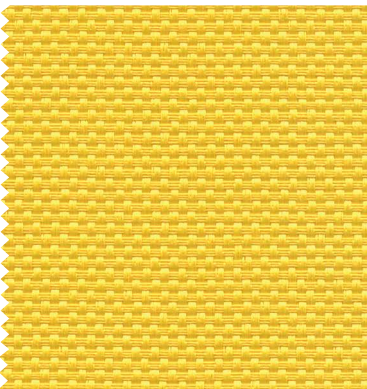
PC88



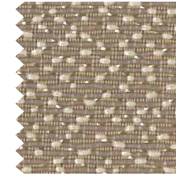
NT99



WH90



WH91



UN44

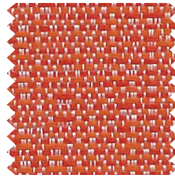


UN55



Galaxy / Galaxie

GX



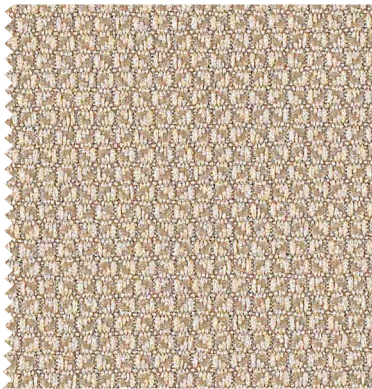
AS73



OF04



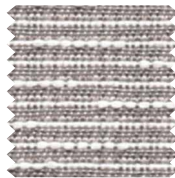
AS51



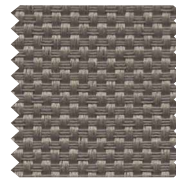
PC31



Carbon / Carbone CB



DH47

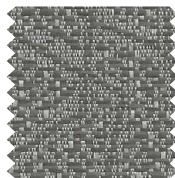


WH85

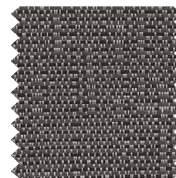


Twilight

TL



YS82



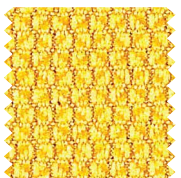
AS91



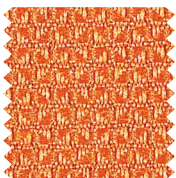
PC76



YS21



PC77



PC43

SPECIFICATION / SPÉCIFICATIONS	WHISPER II*	NETIQUETTE	STRATA	CRYSTALLINE	CASCADE
Composition	53% Recyc. - PC 100% Polyester	31% Recyc. - PC 100% Polyester	100% Recyc. - PC 100% Polyester	100% Recyc. - PC 100% Polyester	100% Recyc. - PC 100% Polyester
Weight-linear yard / Poids-verge linéaire	10.9 oz	9.6 oz	10 oz	11 oz	11 oz
Width / Largeur	68"	66"	67"	67"	67"
PERFORMANCE / PROPRIÉTÉS					
Tensile strength / Résistance à la rupture	Warp : 274 lbs Fill : 150 lbs	Warp : 259 lbs Fill : 132 lbs	Warp : 100 lbs Fill : 100 lbs	Warp : 100 lbs Fill : 100 lbs	Warp : 100 lbs Fill : 100 lbs
Color fastness to light / Résistance à la lumière	40hrs. Class/Classe 4.5	40hrs. Class/Classe 4	40hrs. L5	40hrs. L5	40hrs. L5
Color fastness to crocking AATCC 8 / Résistance au dégorgeement AATCC 8	Dry / Sec : Class 5 Wet / Humide: Class 5	Dry / Sec : Class 5 Wet / Humide: Class 5	Dry / Sec : Class 5 Wet / Humide: Class 5	Dry / Sec : Class 5 Wet / Humide : Class 5	Dry / Sec : Class 5 Wet / Humide : Class 5
Abrasion resistance / Résistance à l'abrasion	ASTM D-4157 100 000 D.R. / D.F.	ASTM D-4157 50 000 D.R. / D.F.			
Cleaning code / Nettoyage	WS	WS	WS	WS	WS
Acoustic textiles / Tissus acoustiques	Yes / Oui	Yes / Oui			
FLAMMABILITY / INFLAMMABILITÉ					
ASTM E-84	Class 1 or A	Class 1 or A	Class 1 or A	Class 1 or A	Class 1 or A
California - Tech. bulletin 117 Sec. E (CS-191-53) Californie - Bulletin tech. 117 Sec. E (CS-191-53)	Passes Passe	Passes Passe			
SAMPLING CONTACT / ÉCHANTILLON	victortextiles.com (418) 227-9897	victortextiles.com (418) 227-9897	artopex.com (800) 363-3040	artopex.com (800) 363-3040	artopex.com (800) 363-3040

SPECIFICATION / SPÉCIFICATIONS	OFF THE GRID*	DASHING	ESSENCE	PACT	UNIVERSE	CAPE COD
Composition	87% Recyc. 49% PI, 38% PC 100% Polyester	100% Recyc. 100% Polyester	100% Polyester	100% Recyc. 65% PI, 35% PC 100% Polyester	50% Recyc. - PC 100% Polyester	100% Recyc. 76% PI, 24% PC 100% Polyester
Weight-linear yard / Poids-verge linéaire	10 oz	10.9 oz	11.8 oz	12.9 oz	11.7 oz	12.4 oz
Width / Largeur	67"	66"	66"	66"	66"	66"
PERFORMANCE / PROPRIÉTÉS						
Tensile strength / Résistance à la rupture	Warp : 188 lbs Fill : 169 lbs	Warp : 240 lbs Fill : 191 lbs	Warp : 140 lbs Fill : 105 lbs	Warp : 292 lbs Fill : 307 lbs	Warp : 137 lbs Fill : 190 lbs	Warp : 150 lbs Fill : 150 lbs
Color fastness to light / Résistance à la lumière	40hrs. Class/Classe 4	40hrs. Class/Classe 4	40hrs. L5	40hrs. Class / Classe 4	40hrs. Class / Classe 4	40hrs. Class / Classe 4
Color fastness to crocking AATCC 8 / Résistance au dégorgeement AATCC 8	Dry / Sec : Class 5 Wet / Humide: Class 5	Dry / Sec : Class 4 Wet / Humide: Class 4	Class/Classe 4	Dry / Sec : Class 4.5 Wet / Humide: Class 4.5	Dry / Sec : Class 5 Wet / Humide: Class 5	Dry / Sec : Class 4 Wet / Humide: Class 3
Abrasion resistance / Résistance à l'abrasion	ASTM D-4157 100 000 D.R. / D.F.	ACTM D-4157 Mod. 60 000 D.R. / D.F.	ASTM D-4157 Mod.	50 000 D.R. / D.F.		
Cleaning code / Nettoyage	WS	WS	WS	WS	WS	WS
Acoustic textiles / Tissus acoustiques						Yes / Oui
FLAMMABILITY / INFLAMMABILITÉ						
ASTM E-84	Class 1 or A	Class 1 or A	Class 1 or A	Class 1	Class 1 or A	Class 1 or A
California - Tech. bulletin 117 Sec. E (CS-191-53) Californie - Bulletin tech. 117 Sec. E (CS-191-53)	Passes Passe	Passes Passe	Passes Passe	Passes Passe		
SAMPLING CONTACT / ÉCHANTILLON	victortextiles.com (418) 227-9897	victortextiles.com (418) 227-9897	victortextiles.com (418) 227-9897	memosamples.com (800) 366-6839	memosamples.com (800) 366-6839	guilfordofmaine.com (800) 544-0200

* OFF THE GRID - lava OF05, thermal OF06 / WHISPER II- dim WH76, peep WH91.

These four colours are not recommended with the TakeOff System.

Ces quatre couleurs ne sont pas recommandées avec le SystèmeTakeOff.

Graded-in and pre-tested fabrics

In order to offer a wide selection of fabrics, a list of fabrics graded-in and pre-tested by Artopex (in various grades) is available at artopex.com. Please refer to the websites of the fabric manufacturers and distributors on this list to view the choices and/or to order samples of complementary fabrics.

Tissus pré-gradés et pré-testés

Dans le but d'offrir une grande variété de tissus, une liste de tissus pré-gradés et pré-testés par Artopex (incluant divers grades) est disponible sur le artopex.com. Veuillez vous référer au site internet des différents manufacturiers et distributeurs de tissus présentés sur cette liste afin de visualiser les choix offerts et/ou commander des échantillons pour ces tissus complémentaires.

Colours may vary from the actual colours due to the printing process used.

Please refer to samples for true colours.

Les couleurs sont aussi fidèles que les techniques d'impression le permettent.

Référez-vous aux échantillons pour les couleurs réelles.

HEAD OFFICE / SIÈGE SOCIAL

800, rue Vadnais

Granby, Qc

J2J 1A7, CANADA

T: 450 378-0189

1 800 363-3040

F: 450 378-9712

artopex.com

artopex®