

**TEXTILES**

**Seating / Chaises  
Stock - Grades 1 & 2**

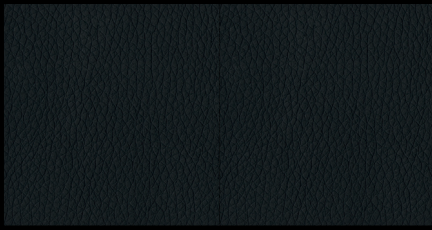
03

03

artopex®

Essentials  
Grade 1

Dillon



Black  
DL99



Graphite  
DL69



Stratus  
DL03

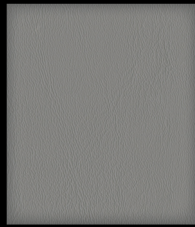


Steel  
DL05

Hathaway



Onyx  
HT99



Smoky  
HT69



Nickel  
HT05



Fog  
HT03

Oasis



Infinity  
OA92



Carbon  
OA83



Coin  
OA82



Arctic  
OA47

Frequency



Cadet  
FQ81

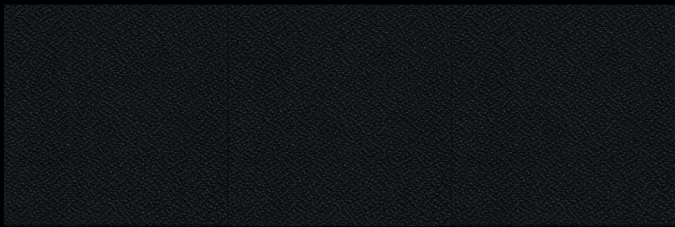


Smokescreen  
FQ82

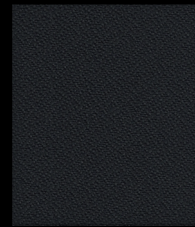


Navy  
FQ41

Genesis



Flint  
GE93



Carbon  
GE84



Moonwalk  
GE82



Eclipse  
GE46

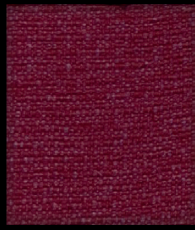


Cinder  
GE83

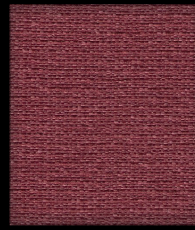


Inspiration  
Grade 2

Cloud Nine



Rose Grenat  
CL30



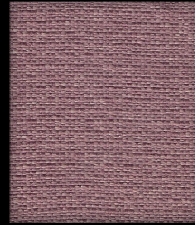
Flamenco  
CL35



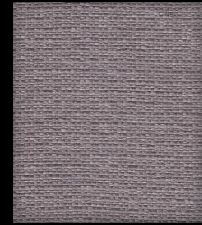
Coral  
CL75



Aubergine  
CL37



Rose  
CL36

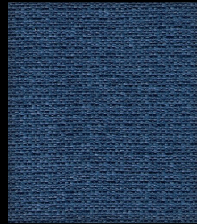


Iris  
CL38

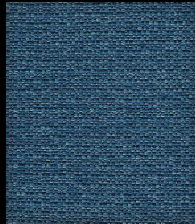
Dijon  
CL25



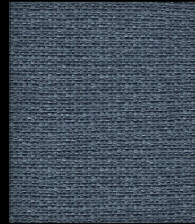
Pluto  
CL40



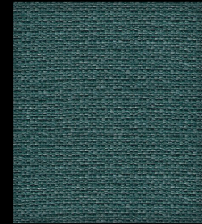
Space  
CL42



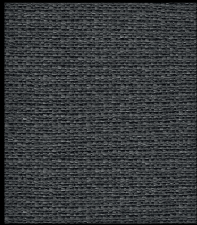
Galaxy  
CL49



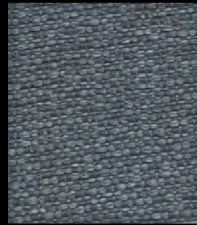
Frost  
CL41



Artesian  
CL53



Charcoal  
CL86



Argent  
CL85



Poplar  
CL18

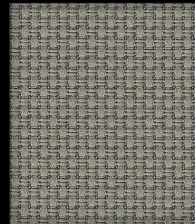


Angora  
CL16

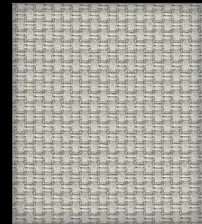
Crosslink



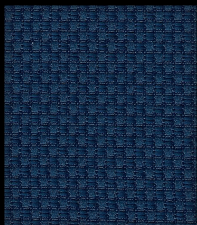
Espresso  
CK74



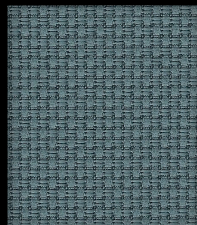
Rosewood  
CK18



Alabaster  
CK17



Midnight  
CK41



Cornflower  
CK42

SPECIFICATION / SPÉCIFICATIONS	DILLON	HATHAWAY	OASIS	FREQUENCY
Composition	100% Polyurethane	100% PVC Vinyl	65% Recyc. Polyester 35% Polyester	65% Recyc. Polyester, 35% Polyester
Backing / Dos	70% Polyester, 30% Cotton	85% Polyester, 15% Cotton	Nvirosoft acrylic	Nvirosoft acrylic
Weight-linear yard / Poids-verge linéaire	20.16 oz	32.12 oz	10.0 oz	10.0 oz
Flammability / Inflammabilité	CA - Tech. bull. 117-2013, UFAC Class 1, MVSS 302, NFPA 260 Class 1	CA - Tech. bull. 117-2013, UFAC Class 1, NFPA 260 Class 1	CA - Tech. bull. 117-2013	CA - Tech. bull. 117-2013
Seam slippage ASTM D4034 / Résistance des coutures ASTM D4034	Warp: 92 lbs Fill: 77 lbs	Warp: 44 lbs Fill: 53 lbs	Warp : 76 lbs Fill : 66 lbs	Warp : 79 lbs Fill : 65 lbs
Tensile strength ASTM D5034 / Résistance à la rupture ASTM D5034	Warp: 112 lbs Fill: 70 lbs	Warp: 106 lbs Fill: 110 lbs	Warp : 157 lbs Fill : 194 lbs	Warp : 172 lbs Fill : 254 lbs
Color fastness to crocking AATCC 8 / Résistance au dégorgeement AATCC 8	Dry / Sec : Class 4 Wet / Humide : Class 4	Dry / Sec : Class 4 Wet / Humide : Class 4	Dry / Sec : Class 5 Wet / Humide : Class 5	Dry / Sec : Class 5 Wet / Humide : Class 5
Color fastness to light AATCC 16 Résistance à la lumière AATCC 16	Class 4 / 200 hrs min.	Class 4 / 200 hrs min.	Class 5 / 40 hrs min.	Class 5 / 40 hrs min.
Abrasion resistance ASTM D4157 / Résistance à l'abrasion ASTM D4157	200,000+ D.R. / D.F.	100,000 D.R. / D.F.	250,000+ D.R. / D.F.	50,000+ D.R. / D.F.
Treatment / Traitement	Antimicrobial / Antimicrobien	Antimicrobial / Antimicrobien	Greenshield®	Greenshield®
Cleaning code / Nettoyage	WS	WS	WS	WS
Disinfection / Désinfection	Disinfectant, peroxide, bleach/water (20%/80%) / Désinfectant, peroxyde, javellisant/eau (20%/80%)	Disinfectant, peroxide, bleach/water (20%/80%) / Désinfectant, peroxyde, javellisant/eau (20%/80%)	Disinfectant, peroxide, bleach/water (10%/90%) / Désinfectant, peroxyde, javellisant/eau (10%/90%)	Disinfectant, peroxide, bleach/water (10%/90%) / Désinfectant, peroxyde, javellisant/eau (10%/90%)
Samples / Échantillons	Culp Contract (336) 889-5161	Culp Contract (336) 889-5161	Artopex (800) 363-3040	Artopex (800) 363-3040

SPECIFICATION / SPÉCIFICATIONS	GENESIS	CLOUD NINE	CROSSLINK
Composition	100% Recyc. Polyester Repreve Our Oceans	65% Recyc. Polyester 35% Polyester	85% Recyc. Polyester 15% Polyester
Backing / Dos	Nvirosoft acrylic	Nvirosoft acrylic	Nvirosoft acrylic
Weight-linear yard / Poids-verge linéaire	13.0 oz	15.0 oz	15.0 oz
Flammability / Inflammabilité	CA - Tech. bull. 117-2013	CA - Tech. bull. 117-2013	CA - Tech. bull. 117-2013
Seam slippage ASTM D4034 / Résistance des coutures ASTM D4034	Warp: 90 lbs Fill: 79 lbs	Warp: 64 lbs Fill: 77 lbs	Warp : 97 lbs Fill : 48 lbs
Tensile strength ASTM D5034 / Résistance à la rupture ASTM D5034	Warp: 304 lbs Fill: 265 lbs	Warp: 137 lbs Fill: 327 lbs	Warp : 284 lbs Fill : 242 lbs
Color fastness to crocking AATCC / Résistance au dégorgeement AATCC 8	Dry / Sec : Class 4.5 Wet / Humide : Class 5	Dry / Sec : Class 4.5 Wet / Humide : Class 5	Dry / Sec : Class 4.5 Wet / Humide : Class 5
Color fastness to light AATCC 16 Résistance à la lumière AATCC 16	Class 4-5 / 40 hrs min.	Class 4-5 / 40 hrs min.	Class 4-5 / 40 hrs min.
Abrasion resistance ASTM D4157 / Résistance à l'abrasion ASTM D4157	500,000+ D.R. / D.F.	200,000+ D.R. / D.F.	100,000 D.R. / D.F.
Treatment / Traitement	Greenshield®	Greenshield®	Greenshield®
Cleaning code / Nettoyage	WS	WS	WS
Samples / Échantillons	Artopex (800) 363-3040	Artopex (800) 363-3040	Artopex (800) 363-3040

**artopex**®

ARTOPEX  
Head office/Siège social  
**artopex.com**

800 Vadnais, Granby QC  
J2J 1A7 CANADA  
T 1 800 378 0189