

# The Art and the Purpose

INSPIRATION GUIDE

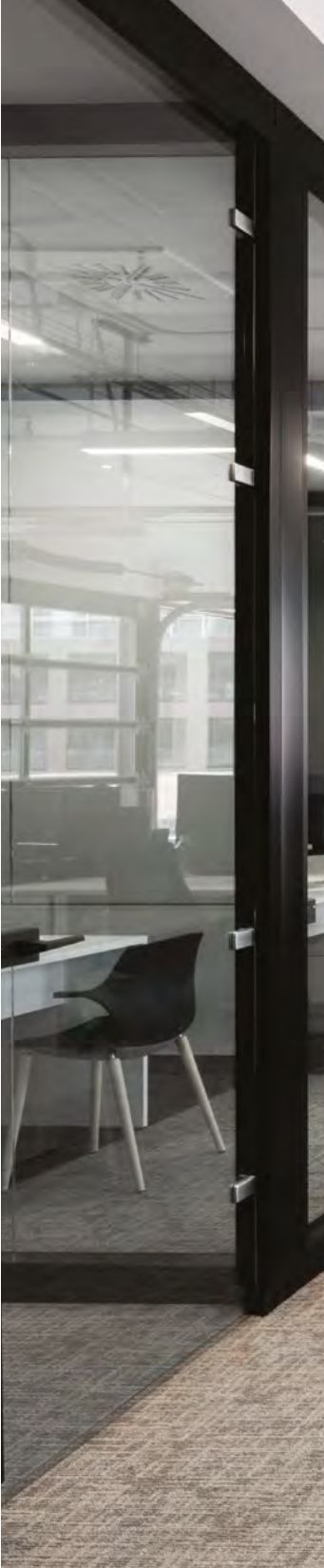


artopex®



## The Art and the Purpose

- 04 **800 Vadnais**  
**The Epicenter of Artopex Collaboration and Productivity**  
The modernization of the corporate Headquarters proved to be an opportunity to rejuvenate the workspaces and transform the corporate offices into a living showroom.
- 30 **The Cafeteria**  
**The Art of Reinvention**  
The conventions of workspace design are broken, and the cafeteria becomes an energizing and welcoming space with multiple purposes.
- 36 **Groupe Germain Hotels**  
**Modern and Streamlined Style by Artopex**  
The Groupe Germain Hotels was looking for furniture to harmonize with the modern decor of their new space while incorporating an innovative approach.





04

30

## Articles November 2018

- 18 **The Nature of Seating**
- 20 **Premier Tech**
- 24 **Fjord**  
Lounge Furniture
- 28 **Bishop's University**
- 40 **Axel**  
An Open Mind
- 48 **Mute Box**  
Furnish Acoustic Comfort
- 50 **Quebec City Airport**
- 52 **Libertas**
- 56 **Natural Beauties**
- 58 **Transcontinental**
- 62 **The Peak Season for New Products**





Artopex Products  
Ping-pong table (available as a special) and Sky architectural walls



# 800 Vadnais

THE EPICENTER OF ARTOPEX  
COLLABORATION AND PRODUCTIVITY

From the first look at the building that houses the Artopex Headquarters, we instantly get an idea of the magnitude of the changes. It is unmistakable that the office furniture manufacturer has impressively embarked on new positioning for the future and that they will never cease to amaze us.

## Artopex goes 4.0

Last spring, in the presence of the Minister of Economy, Science and Innovation; Minister responsible for the Digital Strategy, Ms. Dominique Anglade, Daniel Pelletier announced investments in the order of \$30.1M for the modernization of the Artopex plants and Headquarters. "We were at a crossroads. In order to increase our productivity and, incidentally, our market share in North America, we had to significantly invest in our manufacturing equipment", explains Daniel Pelletier, President and CEO of Artopex.

A tour of the first two phases of robotization initiated at the beginning of the year leaves no doubt that this Granby laminate furniture plant will be transformed into a highly technological manufacturing facility over the next few years.



## 800 Vadnais The Epicenter of Artopex Collaboration and Productivity

### A Headquarters with multiple vocations

The complete redesign of the corporate Headquarters provided an opportunity to entirely transform the workspaces, creating a living showroom. The project, spread over approximately 18 months, required the participation of internal resources, particularly to ensure that the redesign would meet the initial objectives. It was essential that the Headquarters highlight the "Everything under one roof" positioning, valued by the Pelletier family, and feature the many individual and collaborative workspaces that can be designed with Artopex furniture.

The offices of the new Headquarters were planned using the best workplace design practices, an expertise acquired through the completion of numerous projects for clients across Canada and the United States.

A space has also been dedicated to the Artopex Academy that will offer training to dealers, architects, designers and installers. "The Artopex Academy will be first and foremost a platform for strengthening our relationships with our dealer partners and to increase their level of knowledge of the best use of our products in different work environments", explains Francis Pelletier, Director, Customer Experience.



Artopex Products  
Crema visitor chair and stool, Downtown Bistro table and Take Off table



Artopex Products  
Element Active seating stool, Crema stool and Take Off Conference table

The offices of the new corporate Headquarters were planned using the best workplace design practices.



Artopex Products  
RC3 Reception, Cuadro and Fjord Lounge seating, Fences table and Element Active seating stool



800 Vadnais  
The Epicenter of Artopex  
Collaboration and Productivity

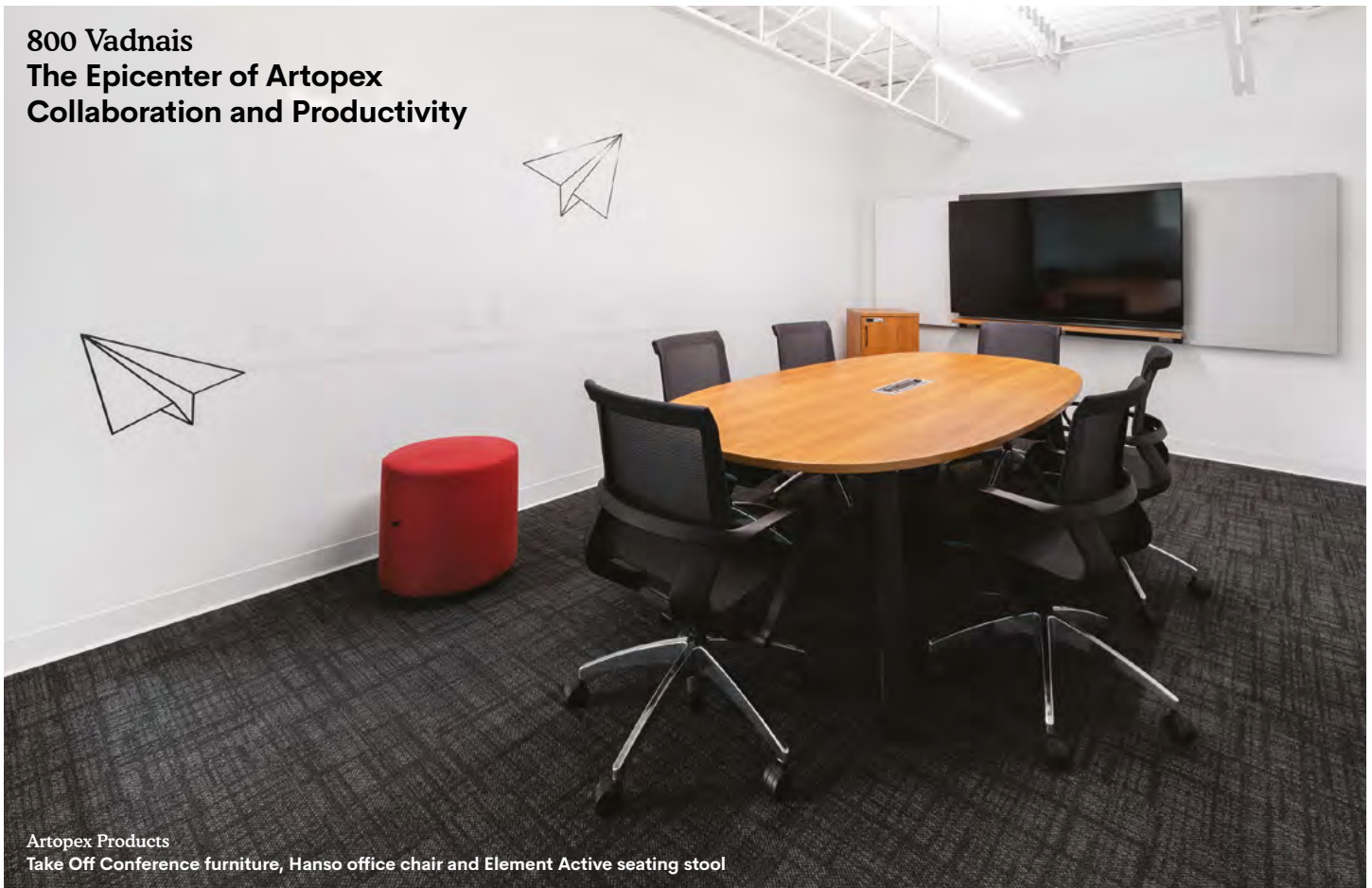








## 800 Vadnais The Epicenter of Artopex Collaboration and Productivity



Artopex Products  
Take Off Conference furniture, Hanso office chair and Element Active seating stool

### Imprinting the employer brand

The new Artopex workspaces were also designed according to a well-established vision for human resources. As with the majority of manufacturing companies in the region, Artopex faces challenges in recruiting and retaining qualified employees. The redesign of the Headquarters represented an opportunity to reexamine the employer brand while creating ways to increase employee well-being. "We wanted to offer employees more than just a new workstation, so we created many comfortable and functional meeting rooms that could accommodate 5 to 10 people to encourage and facilitate collaborative work", states Martin Pelletier, General Manager, Architectural Walls Division. "We also decided to bring together, for the first time, office and plant employees in the same cafeteria".

Every noon hour, management and employees of the production and administration teams gather in a casual space, overlooking the inspiring exterior views of the Eastern Townships. A game room with ping pong and foosball tables has been set up in the cafeteria and an outdoor terrace will officially open in Spring 2019.



Artopex Products  
Downtown Collaborative furniture and Element Active seating stool



The redesign of the Headquarters represented an opportunity to reexamine the employer brand while creating ways to increase employee well-being.



Artopex Products  
Adjustable Table II, metal storage and Sky architectural walls

## 800 Vadnais The Epicenter of Artopex Collaboration and Productivity

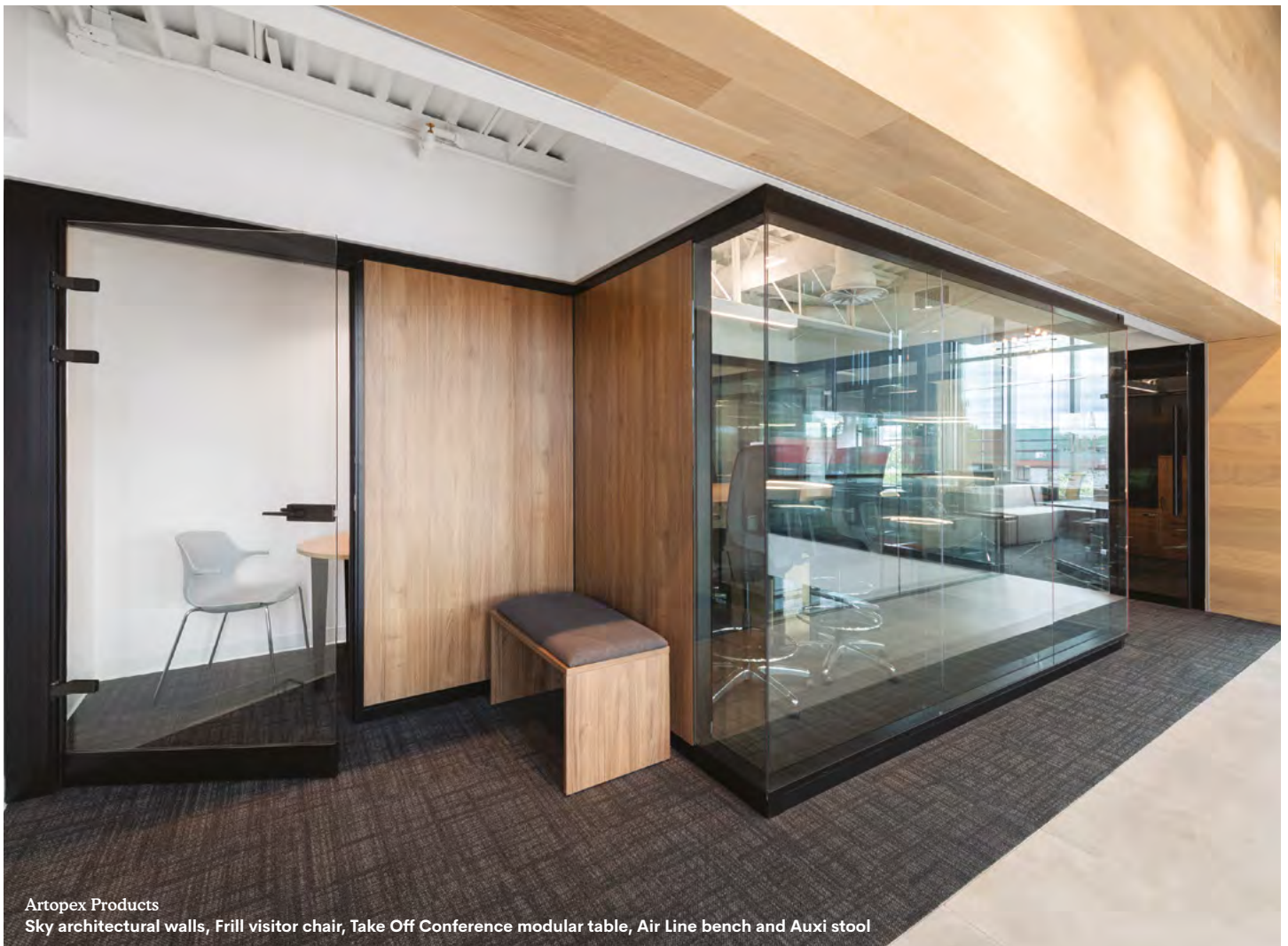
### The signature light-filled ambiance

Sky architectural walls are highlighted in the new Artopex Headquarters in single and double glazing as well as in the mirror finish. These walls define the individual office, open office and meeting spaces while allowing the light to shine through to each floor. The combination of the building's substantial windows proposed by the architects and the natural light generated throughout the space from the Sky architectural walls distinctively unify the ambiance, creating the light-filled signature of the new offices.

Since open office spaces are generating a growing necessity for zones with better acoustic properties

for team meetings or simply for personal calls, this November, Artopex will launch Mute Box, its new line of freestanding booths for one or two to four people. The market suggests a major need for this product that fits easily into any type of space or building.

After experiencing the major transformation, we leave the Artopex Headquarters inspired and captivated by this manufacturer's energy, driven by two generations of entrepreneurs that are continuing to lead the company to new heights.



Artopex Products  
Sky architectural walls, Frill visitor chair, Take Off Conference modular table, Air Line bench and Auxil stool

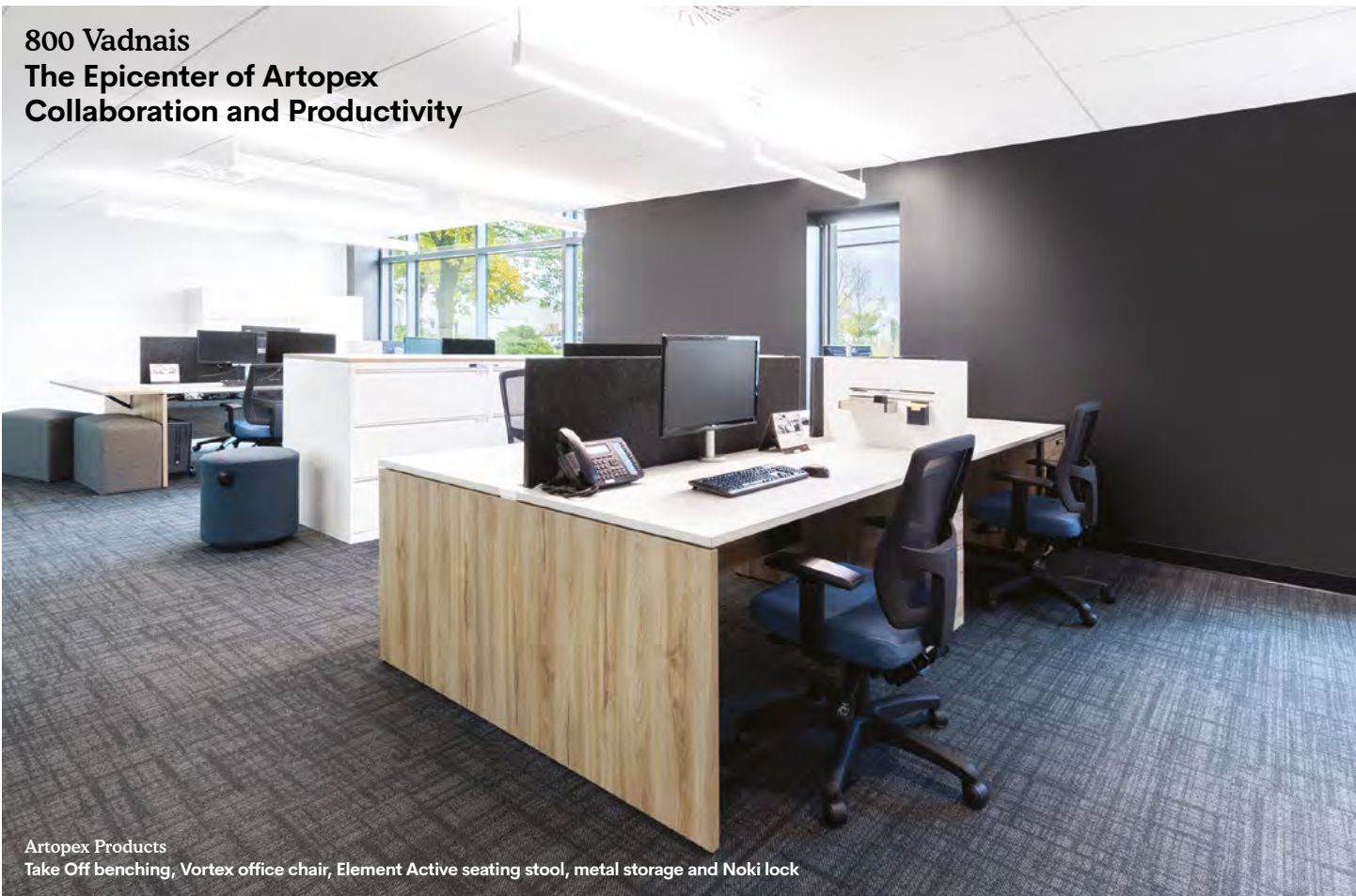




Artopex Products  
Sky architectural walls, Downtown Collaborative furniture and Hanso stool



**800 Vadnais  
The Epicenter of Artopex  
Collaboration and Productivity**



Artopex Products  
Take Off benching, Vortex office chair, Element Active seating stool, metal storage and Noki lock



Artopex Products  
Essentia Conference furniture and Sentinel office chair



Artopex Products  
Metal storage





Artopex Products  
Lockers series and multi-user Noki lock







The manufacturing sector must invest in innovation and embrace new technologies. And that is exactly what Artopex is doing.

# The Nature of Seating

Elegant and timeless, the color blue fosters creativity and serenity.



01

## Metal accessories

Horizontal tray, stationary holder and pencil holder

02

## Office chair

Sentinel



03

## Stool

Element Active seating



04

**Office chair**  
Dotcom stool



05

**Visitor chair**  
Minimax

06

**Grade 5 fabric**  
Fedora (color: Aegean)



07

**Visitor chair**  
Frill



# Premier Tech

CASE STUDY





For the design of Premier Tech's offices in Riviere-du-Loup, Quebec, the project's design firm found inspiration in the company's values: innovation and teamwork. The meeting spaces feature Take Off Conference furniture, encouraging communication and fostering new ideas.



Premier Tech  
Case Study



01



02



03



04



01

**BLITZ  
OFFICE CHAIR**

Blitz provides all the benefits of a superior ergonomic chair, affordably. The ingenuity of the automatic seat-tilt adjustment makes for the perfect fit, naturally.

02

**TAKE OFF TABLE AND DOUBLE  
"O" TECHNO BASE**

Configure a unique, distinguished executive office with the Take Off Freestanding furniture collection. It now offers a selection of unique legs in a variety of colors to pair with the table surfaces.

03

**TAKE OFF CONFERENCE  
FURNITURE**

Take Off Conference furniture is designed to facilitate collaborative and productive meetings. This collection of outstanding quality can be used in meeting as well as training rooms.

04

**LOVEFLEX  
OFFICE CHAIR**

Available in task and executive models, the Loveflex chair is the perfect blend of engineering and design. Customize your chair with your choice of seat, back, armrests, adjustment mechanism and base options.



Artopex Products  
Fjord Lounge chair, medium backrest and footrest, tubular base



# Fjord

LOUNGE FURNITURE

In nature, the deep waterway of the fjord is formed in ancient glacier-carved valleys where ocean water now flows, walled in by steep rock cliffs. The coexistence of the angular forms and organic curves in this natural wonder creates a geometric duality that is embodied in the design of the new Fjord Lounge seating.

Un hôtel par  
A hotel by

MU  
UK

ARCHITECTURE  
CONSTRUCTION

# Fjord Lounge Furniture

## Make yourself at home with Fjord

New generations share a different vision of work from previous ones. Companies are now looking to incorporate elements inspired by residential design, to transform their offices into a place that promotes creativity and evokes the comforts of home, while designing spaces with sustainable, quality furniture. With its welcoming appearance, Fjord Lounge furniture embodies a sense of calm and well-being and responds to the distinct values of today's workforce.

## The collection

In addition to promoting relaxed postures, Fjord's design promotes peace of mind. The chairs are available in two backrest heights (high or medium) with a cross or tubular metal base available in a variety of colors. The headrest integrated into the high backrest provides increased privacy, surrounding the user in a comfortable, personal space. Enhance the residential mood of your space with a footrest and the Fjord tables available in three formats and a variety of colors.



Artopex Products  
Fjord table collection (three sizes available)





Artopex Products  
Fjord Lounge chair, high backrest with headrest and Fjord table, tubular base

# Bishop's University

CASE STUDY





The Bishop's University library was redesigned as a hub of learning resources to better serve its student population. The new space provides a collaborative and dynamic environment, representative of the university's desire to innovate. The use of Element Active seating stools combined with Downtown Bistro tables provides a central space for interaction and learning that encourages knowledge sharing.



**ELEMENT ACTIVE  
SEATING STOOL**

Available in a variety of models, the Element Active seating stools are designed to promote movement, stimulate concentration and encourage an ergonomic non-static posture.



**DOWNTOWN  
BISTRO TABLE**

Table collection with a variety heights, models and functions. Downtown furniture delivers the flexibility needed to create collaborative spaces adapted to your requirements.

# The Cafeteria

THE ART OF REINVENTION

The way we work is in constant evolution. Today, the conventions of workspace design are being broken, and the cafeteria's purpose is being reinvented. It is as synonymous with collaboration and sharing as it is with retreat and relaxation. In keeping with new trends of collaborative work, employees gather in the cafeteria, creating opportunities for spontaneous meetings to brainstorm ideas, to stimulate creativity or just to get to know each other better. Natural light, comfort and inspiring design are central elements in the planning of the cafeteria space.



**Eat**



**Exchange**



**Relax**



**Collaborate**



**Recharge**





Artopex Products  
Crema stool, Frill visitor chair and Take Off Conference table

The cafeteria: a vital space for nourishing the body and the spirit while building friendships.



## The Cafeteria The Art of Reinvention

Visitor chairs are being reinvented to brighten workspaces with a combination of style and comfort. Artopex chairs enhance the decor while also paying attention to ergonomic details for working comfortably or relaxing in the cafeteria.







## **OLÉ SEATING COLLECTION**

Awaken your passion for design with Olé and its distinctive silhouette that speaks to current trends. Its shell is available in wood veneer or plastic in a variety of vibrant colors for your workspace.



### **CREMA STOOL**

Graceful and modern, Crema is a stackable visitor chair that has style. The collection includes a stool with a contemporary low-back design, with the option to add an upholstered seat cushion.



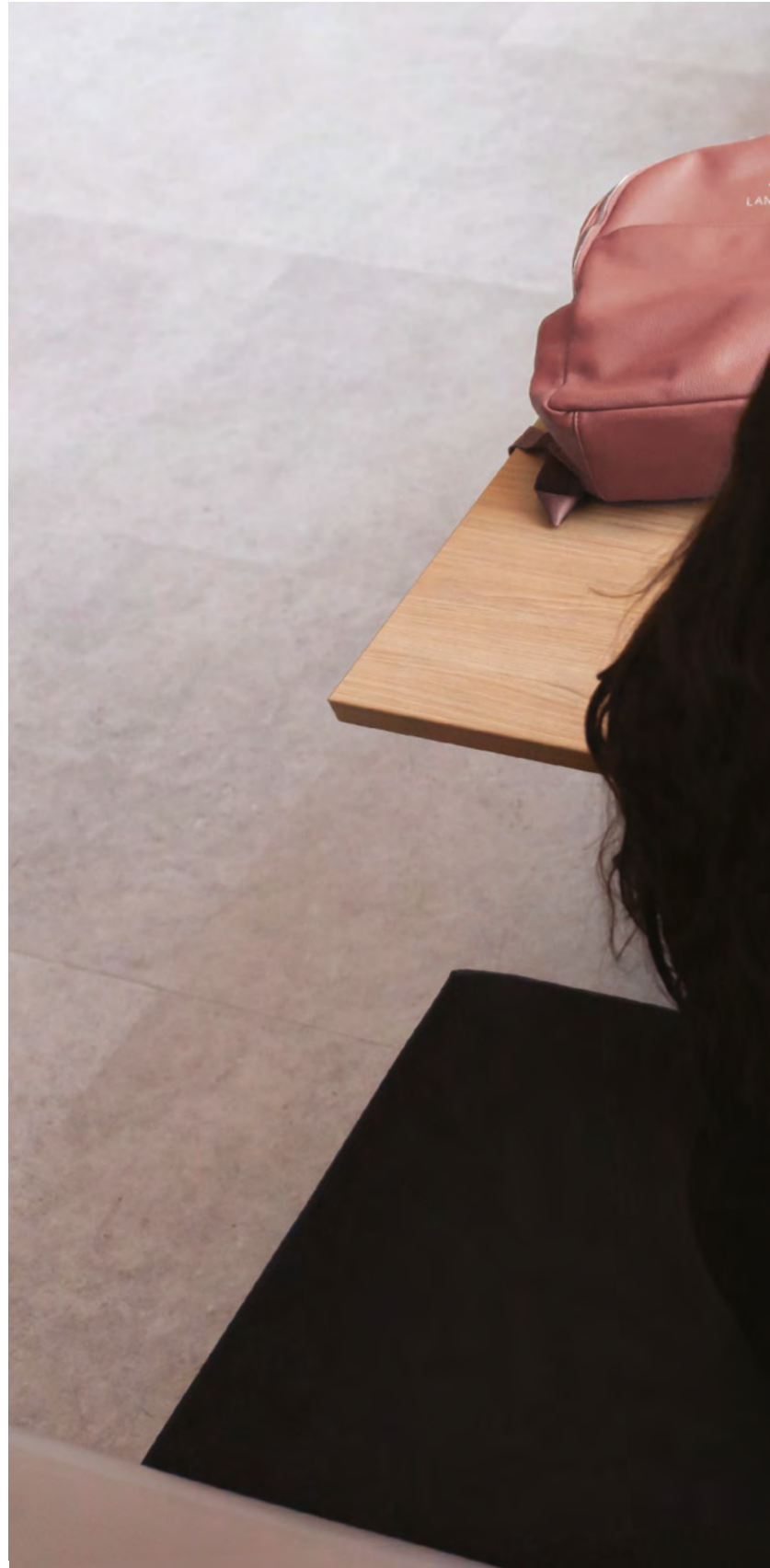
### **XPRESSO STOOL**

The fresh and lively design of the Xpresso chair is available in visitor and stool models, in a variety of colors and styles that redefine the all-purpose stackable chair.

## The Cafeteria The Art of Reinvention

### Work in peace

The cafeteria can be transformed into a flexible and peaceful individual workspace as well as an informal gathering place.















# Groupe Germain Hotels

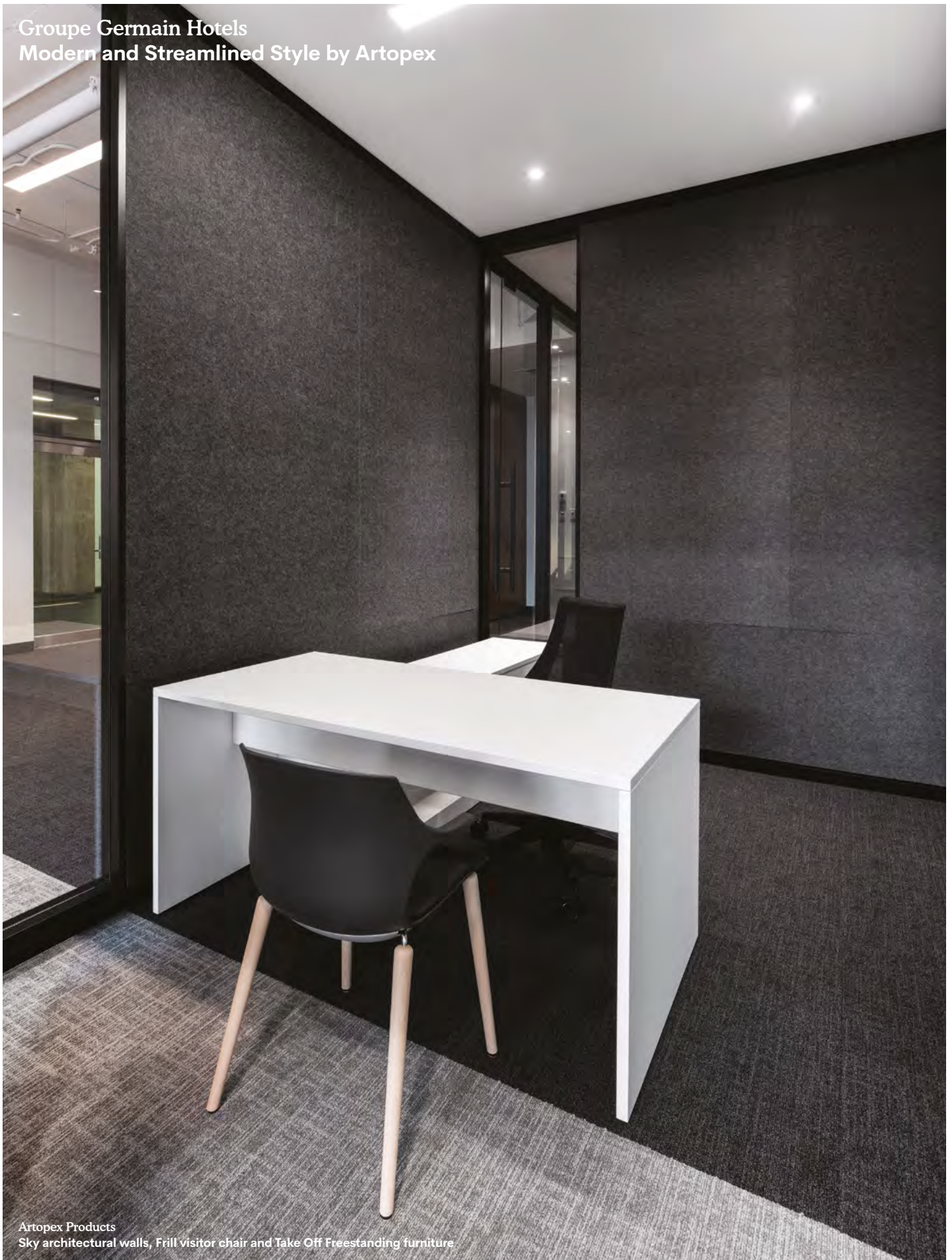
MODERN AND STREAMLINED STYLE  
BY ARTOPEX

Groupe Germain Hotels is a Quebec-based company that owns and operates boutique hotels across Canada. Since opening its first property in 1988, this family-run company has been recognized for its exceptional customer service and for its design in keeping with current trends. As part of Canada's Best Managed Companies, Groupe Germain Hotels offers its guests a distinct and refined experience. Respect, teamwork, daring, aesthetic sense and generosity are the core values of Groupe Germain Hotels and the customer experience they provide.

Artopex is proud to have contributed to the design of their new offices.

Artopex Products  
Sky architectural walls, Frill visitor chair, Element Active seating stool  
and Take Off shared benching table with felt privacy screen

Groupe Germain Hotels  
Modern and Streamlined Style by Artopex



Artopex Products  
Sky architectural walls, Frill visitor chair and Take Off Freestanding furniture



The Groupe Germain Hotels head office was moving into a new space and management wanted to rethink the ways their teams work and collaborate. The meeting rooms as well as the private and open offices were designed to encourage communication and collaboration. The Sky architectural walls were integrated to create private meeting spaces and to increase productivity in the private offices while exposing the beauty of the space. They ensure a light-filled environment while preventing sound from becoming a distraction. The walls of the closed meeting rooms are covered with felt to ensure superior acoustic properties.

Benching tables for individual workstations are also paired with Element Active Seating stools to promote movement while working, encourage a non-static ergonomic posture and promote collaboration. Groupe Germain Hotels placed

the needs of their employees at the heart of their design decisions to create a flexible and harmonious work environment that encourages creativity and the pursuit of professional objectives. The company is elated with the entire project as it assimilates its modern signature and follows current trends in workspace design.

**Groupe Germain Hotels placed the needs of their employees at the heart of their design decisions to create a flexible and harmonious work environment.**









# Axel An Open Mind

WHEN OFFICE FURNITURE  
ADAPTS TO HUMAN BEINGS

At the start of 2019, all eyes will be on Axel, the brand-new open office space design solution by Artopex. This tile systems furniture was designed to intelligently support the emergence of open offices. Its design allows for the configuration of zones with varying degrees of interaction and acoustics, while offering abundant flexibility for customization.

Axel offers a variety of styles to fit the task at hand and the roles to be performed in the context of the work day. This platform makes it possible to have multiple open office configurations combined with semi-enclosed offices, collaborative multimedia zones and “bubbles” for quiet and concentration.

## Axel An Open Mind

For collaborative work and relaxation zones, Axel features pavilions that balance the work space beautifully. The semi-enclosed pavilions create signature spaces and gathering places that convey a feeling that is closer to nature. The pairing of tile textures and finishes such as felt, glass and acrylic generate work environments imbued with authenticity and acoustic management integrated into the design.

Artopex has meticulously chosen a wide range of finishes for its new systems furniture and will introduce a Grade A fabric card specifically for the product in January, offered at competitive prices and in a choice of contemporary colors. A product to watch for in January 2019!

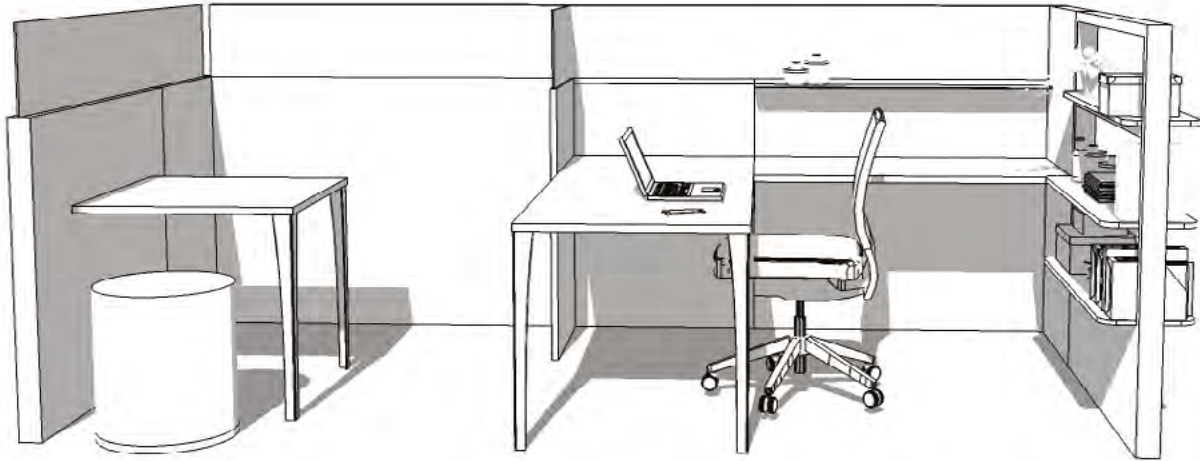


**Workstation**  
Semi-enclosed, for a higher level of privacy and concentration



**"Privacy bubble"**  
For relaxation





**Open office**  
Multitude of functions



**Open space workstations**  
Collaboration and interaction

Axel  
An Open Mind

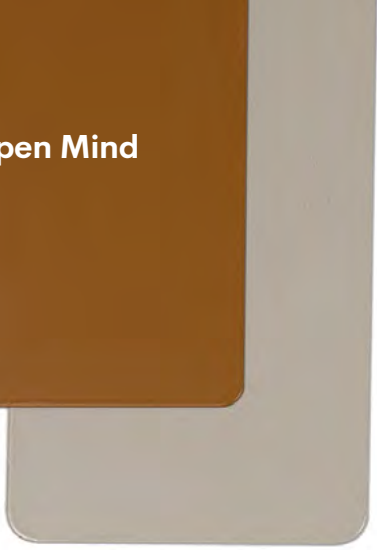
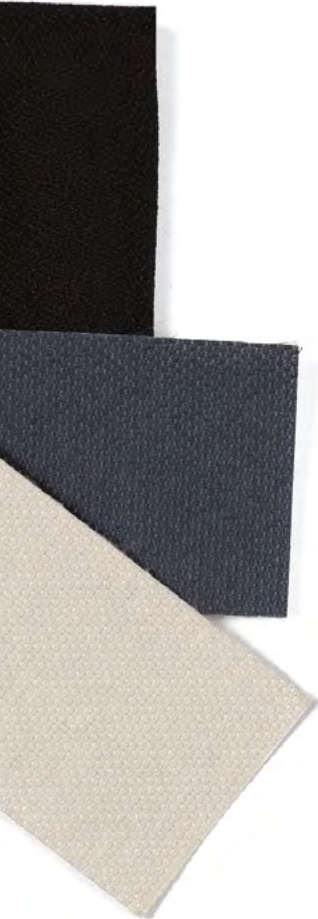
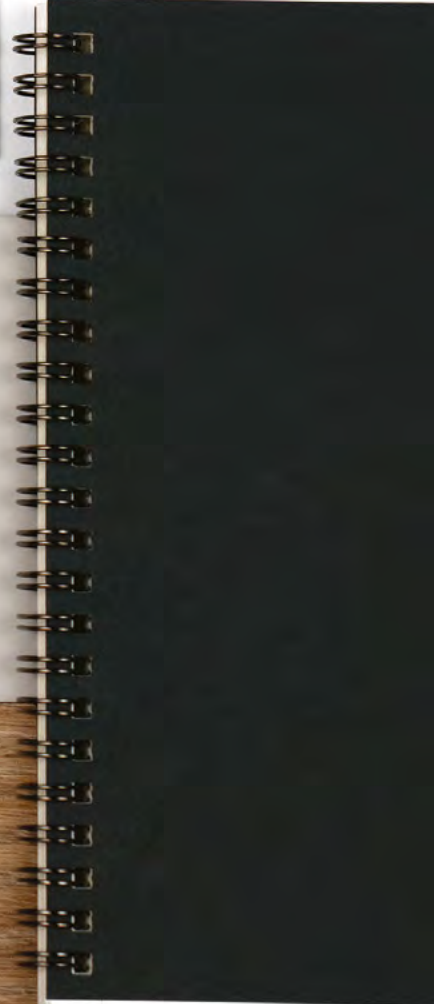








Axel  
An Open Mind





A flexible platform of modular elements for the creation of open workspaces with complete freedom thanks to a wide range of colors, textures, finishes and materials.

# Mute Box

FURNISH ACOUSTIC COMFORT







### **Silence is now part of your space**

Artopex will officially launch its new collection, Mute Box, comprised of fully furnished, freestanding booths. Two models will be available with different options: the Solo booth for individual work and the Collab for collaborative meetings of two to four people.

The high level of acoustic comfort offered by the Mute Box booths creates a space to gather our thoughts away from the noise of the workplace. The Solo booth was specifically designed to provide a place to make a private call or to do individual work that requires a high level of concentration. The Collab booth provides configurations to support a variety of meeting styles, while ensuring zero interruption from the surrounding noise. The fact that the Mute Box booths are freestanding is a major advantage, as they can be easily integrated into any space without changes to the existing building. They also feature technology options for integrating television screens, for example, as well as a wide range of finishes to customize the look of your booth.

The Mute Box collection undoubtedly answers the need for privacy and quiet that is emerging from open office spaces.

# Quebec City Airport

CASE STUDY



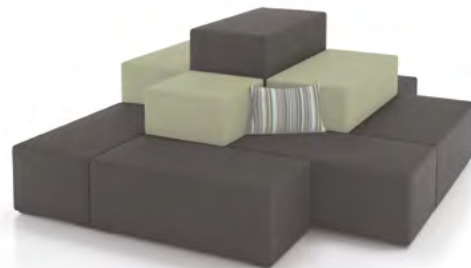


The Jean-Lesage Quebec City International Airport project had to combine comfort and design. The result: an open and elegant airport with Voyager beam seating located near the departure gates as well as Cuadro and Downtown lounge seating for greater comfort. To meet the requirements, a few products were developed specifically for the project.



#### **VOYAGER BEAM SEATING**

Voyager beam seating is flexible, durable and comfortable. The modular seating, tables, ottomans and footrests combine easily to create a multitude of configurations.



#### **DOWNTOWN LOUNGE FURNITURE**

Design collaborative lounge, meeting and gathering spaces with the casual office furniture of the Downtown collection using a wide range of bench seating options.

# Libertas

CASE STUDY







The design of the commercial condos in the new Libertas Building offers unconventional and inspiring spaces for companies looking for a refined workplace. Sky architectural walls were chosen for their ability to create private environments for meetings and individual work while ensuring team productivity. The result: a streamlined, bright and contemporary workplace that reflects to the corporate DNA of the companies occupying the spaces.

Libertas  
Case Study



01



02



03



04



01

### **TAKE OFF FREESTANDING FURNITURE**

Take Off is an exceptionally versatile collection for designing open and private offices. The Take Off shared benching tables encourage communication and the layering workstations make it possible to create a variety of storage spaces.

02

### **BLITZ OFFICE CHAIR**

With its breathable mesh backrest and comfort options such as a headrest and height-adjustable lumbar support, Blitz blurs the line between work and relaxation.

03

### **FRILL VISITOR CHAIR**

Bring your workspace to life with Frill. These chairs add a fresh style to both the office and waiting rooms.

04

### **SKY ARCHITECTURAL WALLS**

Sky architectural walls were designed to create bright environments that encourage both collaboration and concentration, while dramatically highlighting the aesthetics of the space.

# Natural Beauties

Evoke calm and tranquility in your workspace designs by combining nature-inspired colors.



01

**Metal accessories**  
Vertical tray and pencil holder

02

**Lounge seating**  
Lancelot





03

**Office chair**  
Vortex



04

**Visitor chair**  
Olé



05

**Metal storage**  
Pedestal with cushion



# Transcontinental

CASE STUDY





Transcontinental was moving into a new office space and wanted to create a bright open office environment with a configuration that would provide enough privacy for productive individual work. The Air Line office furniture collection was chosen for its clean lines as well as Uni-T systems furniture to ensure the required level of privacy. The Noki electronic lock was selected to complete the design and to respond to the significant storage requirements.



# Transcontinental Case Study



01



02



03



04



01

### **AIR LINE**

This ergonomic desk and storage collection provides limitless combinations and configurations for both private and open office workspaces.

02

### **FILE CABINETS**

Artopex storage modules (cabinets, file cabinets and pedestals) cover every requirement. They are available in a variety of heights and configurations and come in 30 enamel colors to match all Artopex collections.

03

### **UNI-T SYSTEMS FURNITURE**

Unit-T panel systems furniture suits open offices, individual workspaces, conventional or benching configurations. The panels provide privacy and allow for the installation of electrical components and office accessories.

04

### **NOKI**

Noki, the keyless electronic lock exclusive to Artopex, is a simple and efficient security system, available on all Artopex storage products. The multi-user model can be programmed with a 6-digit combination that automatically resets after each use.

# The Peak Season for New Products

Artopex will introduce three additional new products this fall that you will absolutely want to use in your designs.



01

## ADJUSTABLE MEETING TABLE

Sit-to-stand furniture has become an integral part of the office landscape. In keeping with this trend, Artopex presents a series of adjustable meeting tables. Equipped with a pneumatic height adjustment system, this table is available in a variety of surface shapes and sizes, with a black or silver base. Position it at the end of a desk for an extra sit-to-stand work surface or in an open space for collaborative meetings.



02

## GENIUS EDUCATIONAL CHAIR

The Artopex Genius collection has a new player: the educational chair. This chair's ergonomics are perfectly adapted to the needs of learning configurations: casters on the base, swivel seat, integrated storage for backpacks and a work surface with a cup holder and tablet support. The Genius educational chair corresponds impeccably to the "flexible learning" movement.



# The Art and the Purpose

LT946-A-1118

## Legal Deposit

Bibliothèque et Archives nationales du Québec

## For the health of the planet

The art and the purpose, an inspiration guide that respects the environment.

Printed on Rolland Paper Enviro 100, containing 100% post-consumer fibres, manufactured using biogas energy. It is certified by the Chlorine Free Product Association, has Ancient Forest Friendly™ designation and ECOLOGO 2771.

## We saved

12 808 kg of CO<sup>2</sup> = 51 043 km by car.

282 kg of waste = 143 times the average daily amount of waste generated per Canadian.



03

## LOG STOOL

This versatile, adjustable stool is perfect as extra seating in an office or in lounge configurations. Its height adjustment and pivoting base encourage concentration and strengthen the core muscles as well as improve blood circulation and posture. The easy maintenance plastic base also corresponds to the education sector requirements.

artopex®

ARTOPEX  
Head Office

**artopex.com**

800 Vadnais Street  
Granby, QC Canada J2J 1A7  
T 1 800 378 0189